



- MORE ON YOUR 2022 SNU BOARD MEMBERS
-
- RALLY TIME 2022 IS ONLY 2 MONTHS AWAY

THE AIRSTREAMER

PRESIDENT'S LETTER

Greetings! One of the benefits of becoming a member of the Sierra Nevada Unit is camping in new places. We've been able to join the SNU for a few trips here and there, have discovered new places in our surrounding areas, had a few adventures, and made new friends.

A typical rally weekend has members showing up Thursday, Friday, and Saturday. There is usually a pot luck dinner and it seems there's always plenty of coffee in the morning. Discussions about all-things Airstream, boondocking, leveling, and tow vehicles are frequent and helpful. Some members take hikes, some stay close to home, and some, like us, try for a bike ride or river trip. One of our most memorable weekends involved a litter of curious kit foxes coming to our vehicle (we think mom and dad were likely out hunting) after a soak in a local hot spring.

Take a look at the 2022 Rally Schedule; there's something for everyone! I hope you can join in at least 1 rally (if not more) this year and I promise you'll enjoy your time with our club members. Susie is hosting lunch in March and I for one am looking forward to seeing her slice of heaven.

Cheers! *Jeni Root*



IT'S NOT TOO LATE TO RENEW YOUR WBCCI MEMBERSHIP

Okay, maybe you missed **Remember to Renew** in 2021; it's not too late. Follow the instructions in the renewal emails you received from Headquarters or go online at: airstreamclub.org/members/login as the primary member and follow the prompts to renew! New members, go to airstreamclub.org and click the 'Join Now' button.

CALENDAR OF EVENTS

February Luncheon - No luncheon planned for February!

March Pizza Luncheon, Saturday, March 19th at 11:30 - March weather has been iffy in recent years so we thought we would just get ahead of it and plan a luncheon. Secretary Susie Brown has invited us to her home for a pizza party. We will dine outside and meet her animal flock, her horse named Takota and her goats and chickens. If weather interrupts our plans we'll dine in her home at: **1734 Toni Ct, Minden NV** . **Reservations are Requested** so we can make sure we have enough pizza and salad. Please reply to snu157@wbcci.net .

Sierra Nevada Unit Board
Jeni Root, president
Susie Brown, secretary
Gail Williams, treasurer
Jerry Thornburg, trustee
Bill Swirsky, trustee
Gene Baleme, Past President
Don Williams, membership chair & newsletter editor
all links clickable

Rye Patch Rally, Thursday April 21st, 2022 - Sunday April 24th at the RiverBend Group Campground - We reserved the group campsite along the Humboldt River so we our members can camp together. Rye Patch and the surrounding area has opportunity for bird and wildlife watching, hiking, fishing, 4 wheeling and following history (Pony Express, Wells Fargo Stage, historic railroad and auto routes). Put this one in your calendar now!

AIRSTREAMER LOOK BACKS

20 YEARS AGO IN FEBRUARY AND MARCH:

The December 2001 SNU Newsletter reported on:

- Installation of 2002 officers at Thurman’s Ranch House in Carson City;
 - Upcoming luncheon at the Airport Plaza Hotel and Restaurant.
- <http://sierranevadaairstreams.org/snu/news/archives/01dc-nwsltr.pdf>

The January 2002 SNU ‘Airstreamer’ broke new ground in a newsletter format covering:

- Luncheon at Bodine’s in Carson City;
 - 2002 Luncheon & Rally Calendar <Emphasis was on luncheons, only two rallies planned for the year. It would be 2004 before the SNU hosted more rallies than luncheons as they remade the club following Wally Byam’s Creed and Wally Byam Four Freedom’s - “Freedom from arrangements; Freedom from the problems of age; Freedom to discover & to know; Freedom for fun.”>;
 - Lastly, featured prominently on page 2 was a picture of an Airstream Squarestream <is it Bill & Mary’s>.
- <http://sierranevadaairstreams.org/snu/news/archives/02ja-nwsltr.pdf>

10 YEARS AGO IN FEBRUARY AND MARCH:

Our December 2011 ‘Airstreamer’ reported on:

- Nov Luncheon at BJs BBQ;
- President’s Letter from Dyann McDonald Thornburg summarizing on the ‘Thanksgiving’ special rally at Fort Churchill’s Scout Camp, great but cool weather, turkey deep-fried to perfection with sides galore;
- 2011 Rally highlights at Weed Heights, Boca Rest, Sweetwater Summit, Hickison Petroglyphs, obsidian Dome, Campground by the Lake and Fort Churchill’s Scout Camp;
- Upcoming 2012 rallies at Mason Valley, Pyramid Lake, Eagle Lake, Crocker-Bechworth, Weed Heights, Obsidian Dome and Fallon Cantaloupe Festival.

<http://sierranevadaairstreams.org/snu/2011/11news/11dc-snu-nwsltr.pdf>

The January ‘Airstreamer’ featured:

- The well attended December luncheon at Overland in Fallon;
- The upcoming January luncheon at Black Bear Diner in Fernley;
- SNU history of Community Involvement;
- 2012’ Rally and Luncheon schedule;
- 1950’s WBCCI Song Book including ‘Home on Four Wheels’ <sung to ‘Home on the Range’>.
- <http://sierranevadaairstreams.org/snu/2012/12-news/12ja-snu-nwsltr.pdf>

RALLY TIME 2022 IS COMING SOON!

COVID is softening its attack on our health here in 2022. Come out and rally with the Sierra Nevada Unit if you feel the need to cut loose. We have kept some of our favorites rally sites, changed some slightly and slipped in a couple of new ones. The SNU suggests you checkout the rally sites views ([follow the links](#)) and load up your online calendar for the year with the SNU rallies as your highest priority!

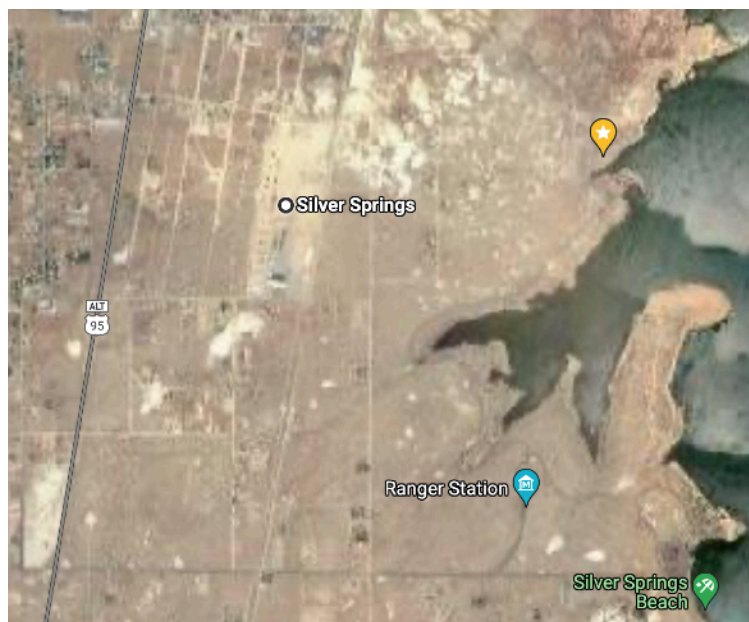


Something new, for 22 (rhymes)! Try clicking on each aerial view rather than the obvious link; it should open your browser and take you to the Google Map

APRIL 21-24 — We’ll start the season at Rye Patch State Recreation Area east of Lovelock, NV in the River Bend Group Campsite. Located along the Humboldt River at 4100 ft, we may see snow visible on the Humboldt Range to the east while we enjoy sunshine and daytime temps in the mid 60s; nighttime mid 30s. There is plenty to do here; bird watching and searching for larger wildlife, fishing, hiking, exploring transportation history for the Pony Express & Wells Fargo Stage, and four wheeling. If that’s not enough visit Lovelock <http://travelnevada.com/cities/lovelock/> and Winnemucca <http://travelnevada.com/cities/winnemucca/> only minutes away (at 80 mph). <http://goo.gl/maps/mFz4zifyiak8neG98>



MAY 19 - 22 — May will find us at Lahontan State Recreation Area east of Silver Springs, either camping dispersed on Beach 7 (start pointer) or in its nearby developed campground (on the right just before the beach). Lahontan is



For more info on the Sierra Nevada Unit go to: sierranevadaairstreams.org/snu/ , Sierra Nevada Unit of the WBCCI on Facebook or email us at: snu157@wbcci.net . (all photos courtesy of the Sierra Nevada Unit)

nested east of Silver Springs at 4160 ft elevation. We can whittle away our time bird watching, searching for wildlife and Airstream bench racing (swapping stories and telling lies) in daytime temps averaging in the mid 70s and night time in the high 40s. <http://goo.gl/maps/WV887QaqzRMeXVN17>

JUNE 16 - 19 — Sweetwater Summit, south of Smith Valley, has our attention for June although we may throw in a wrinkle and use one of the dispersed sites on the west side of the highway past the dirt runway. Expect sunny skies, highs in the upper 80s and lows in the mid 50s. There's lots of places to 4 wheel or hike, you could even use an unofficial border crossing to slip west into California. <http://goo.gl/maps/RucQjor2uroxE2aH6>

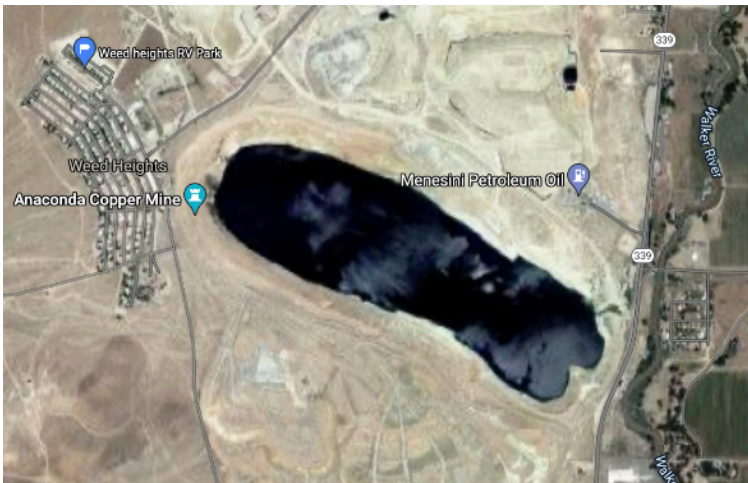


August 17 - 21 — Berlin-Ichthyosaur State Park isn't really a new rally location for the SNU but it's been years since we have camped here. What's really new is the rally start; on Wednesday. Berlin-Ichthyosaur has a small campground so we are starting midweek to give us chance at the best campsites. The park offers hiking trails, fossils of Ichthyosaurs (ancient marine reptiles that swam in a warm ocean that covered central Nevada 225 million years ago) and the 1890s Berlin ghost town kept in a state of arrested decay. Nearby Ione Valley and it's barrier Paradise Range and Shoshone Mountains offer many desert roads leading to more ghost towns for your visiting pleasure. <https://goo.gl/maps/3PTNE8dG2svBCcLU7>



Note, our September rally, is scheduled for 4th weekend instead of the third! It gives members a chance to attend the Reno Air Races or the Region 12 Rally in San Diego Bay.

JULY 14 - 17 — We'll return to Weed Heights RV Park, once providing a home to workers at the Anaconda Copper Mine west of Yerington. We'll enjoy the full hookups, great showers and air conditioned community room for our Airstream bench racing and shared meals when Summer highs approach the mid 90s. We can relax outside when night time lows drop into the 60s. Walk Downtown Yerington during the day with options to shop, dine and take in the history at the local Lyon County Museum; check <https://travelnevada.com/cities/yerington/> for everything on Yerington. We're hoping that Jerry Thornburg will make his famous Nevada Surf 'n Turf for Saturday's evening meal. <https://goo.gl/maps/Fp2XLvAf5ttRr7kL6>



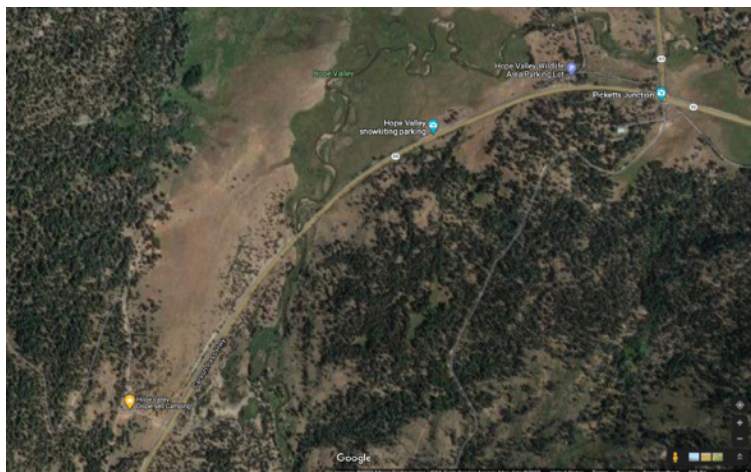
September 22 - 25 — We'll host the Sierra Nevada Unit's 46th Anniversary Rally at Walker River State Park. Late September should bring great temperature for our Anniversary Rally, daytime highs in the mid 80s, nighttime near 50. The park includes four ranch units: Pitchfork Ranch, Rafters 7 Ranch, Flying M Ranch and the Nine Mile Ranch. Pitchfork Ranch is open to the public with camping at its Riverbend and RV Campgrounds and the Elbow section of the Nine Mile Ranch is open for exploration and primitive camping near the Elbow. Both units offer hiking, fishing, canoeing/kayaking with some OHV areas. <https://goo.gl/maps/DhKw5vLKhYyFQdcW9>



Satellite photos haven't caught up with park development, click the link.

For more info on the Sierra Nevada Unit go to: sierranevadaairstreams.org/snu/ , Sierra Nevada Unit of the WBCCI on Facebook or email us at: snu157@wbcci.net . (all photos courtesy of the Sierra Nevada Unit)

October - We'll close out our 2022 rally season in the Hope Valley Dispersed area in the large meadow north of Carson Pass Highway (CA-88) and west of the Luther Pass Road turnoff (CA-89) at Picketts Junction. While temps may be low, 60 highs and upper 20s lows we won't notice if we're able to languish in the mountain sunshine or hike the many informal trails in the Humboldt-Toiyabe National Forest. <https://goo.gl/maps/bnb8xmSobf61TS5r7>



We have crisscrossed the county West Coast to East Coast and back every year since 2005 to visit family and friends, attend rallies, caravan and other things we like to do. We now have a 2012 International which is our forever Airstream. Whaaaaat <editor>.



MEET YOUR SNU OFFICERS:

Jeni introduced herself as our SNU president last issue but we didn't get to hear from the other board members.

SECRETARY SUSIE BROWN #5701

I did a little tent camping prior to retiring and moving to Nevada, but I always drooled over any Airstream I ran across. I inheriting a bit of money from my parents and decided to pursue my dream to actually own one. One inspiration was that I wanted to be able to travel with my dogs; the other was that many of my new friends here enjoyed trailering or RVing. I purchased my 23' Flying Cloud in the fall of 2017 from Airstream Adventures in Caldwell, ID when visiting my son for Thanksgiving. I named her "Cleo" after my Grandmother.



My best adventure so far was a trip with my "Mini Me", my granddaughter! We went to Stanley, Idaho where my son, his daughter & son-in law joined us for a week long rafting trip down the Middle Fork of the Salmon River. From there we headed to Montana & Wyoming to visit Little Big Horn, Yellowstone & the GrandTetons before heading back through Jackson Hole and Elko. My other adventures have been mostly weekends with the exception of caravanning to Utah with good friends to see an amazing Draft Horse Show. I'm looking forward making this a busy year getting out with "Cleo".

TREASURER GAIL WILLIAMS #14207

My family never camped so when Don and I got married I was introduced to a whole new world. We started with tent camping; Don quickly learned that I didn't like camping so he kept trying to find things to make it better. We went from the tent to a small truck with a topper shell, a full size van, back to a tent when we had kids and then an old motorhome from my parents. After the kids grew up we went to the RV Show at the Los Angeles County Fairgrounds, saw the Airstreams and fell in love. We went home with a die cast model of a ## Bambi, swag as a part of our purchase of a 2005 Airstream.



PAST PRESIDENT. GENE BALEME #15229

With my time as president over Carmen and I are free to do the same things we always do. It is so hard to find dispersed camping for large groups so I want to scope out places for rallies. I plan on doing a lot more ATV trips, UTV camping trips, backpacking and camping. With the virus going away 2022 should be a great year.



Sign up now for the FRYEBURG MAINE event! Six days of fun, friendship, and all things Airstream at the 65th Airstream Club International Rally.

There will be six days of fun-filled events, seminars, social gatherings, tours, food, and entertainment. Fryeburg is located between North Conway, New Hampshire, and Bridgton, Maine, on the west side of the state. Fryeburg also offers a variety of recreational opportunities. Including the White Mountains National Forest, the Saco River, and numerous ponds and lakes nearby. Other sites of interest include Jockey Cap Rock, Fryeburg Farm Museum, and the Fryeburg Historical Society and Museum.

Conway, New Hampshire is a short drive with outlet stores, many restaurants, museums, golf courses all with the friendliness of a small town. Fryeburg also offers restaurants and shopping opportunities that include farm stands with local produce and products, craft beers, wines, and locally made crafts.

<https://airstreamclub.org/fryeburg/2022-ir-registration>