



SUSIE BROWN IS OUR SEPTEMBER
 PRESIDENT'S LETTER GUEST WRITER
 ANNIVERSARY RALLY AT WALKER RIVER,
 SEPTEMBER 22ND - 25TH, PAGE 2
 WBCCI DELEGATE'S REPORT, PAGE 2
 2023 RALLY PLANNING, PAGE 3
 BERLIN- ICHTHYOSAUR RALLY & PHOTO
 COLLAGE, PAGES 5 & 6

THE AIRSTREAMER

PRESIDENT'S LETTER

Jeni is still traveling so we welcome Susie Brown as our guest writer.

Greetings from Susie Brown! Unfortunately, I have only made it to one SNU rally this year. That was the one in July at Weed Heights and not too many of our members showed up, understandable given the heat! I did enjoy spending time with Dyann & Jerry, and Gene and Carmen until my dog became sick and I heading home early.

None the less, I have gotten a couple of great trips in with the Airstream (Cleo). In May I went with several lady friends to Morro Bay State Campground. What a beautiful spot! Lots of trees and just a short walk to the Bay. There was a nesting ground for several varieties of water birds nearby. It was a busy place in May! Lots of good hiking, kayaking and visits to the charming town.

The next trip was in June to Convict Lake. A wonderful State Campground with a great hiking trail around the lake and the dogs had fun swimming in the Lake...still too cold for the people! A highly recommended 5 star restaurant, *The Restaurant at Conflict Lake* was within walking distance so we splurged and had dinner there.

After losing my dog in June I just rescued a McNab mixed breed, 10 months old. I'm hoping to make the Walker rally, but unsure if this new guy is ready to camp. Chase, myself and the SNU board members invite you to Walker River too! Hopefully we'll make it and I'll see you there!

Safe Travels

Susie Brown

THE SNU FAMILY MEMBERSHIP NEWS

- Welcome new member Lori Kelly #12822 of Henderson, NV. Lori owns a 2021 22' Bambi.

CALENDAR OF EVENTS

Region 12 Bayfair Rally, San Diego, CA, Friday September 16th - 18th - rally reservations were still available, contact your editor.

Slate of Officers & Board Members, it's that time of the year for nominations for 2023 officers and board members, **VOLUNTEER!**

SNU Anniversary Rally at Walker River SP, Thursday September 22nd - Sunday the 25th Join us at Walker River State Park north of Yerington, NV for the Sierra Nevada Units 46th Anniversary! Can't stay the whole time; fit your time to be with us one of more days, especially Saturday nights dinner celebration.

SNU Hope Valley Rally, Thursday October 20th - Sunday the 23rd - Join us at Hope Valley dispersed area on CA-88, west of and Markleeville, CA and CA-89. Hope Valley dispersed area is near 7000 feet elevation so we'll plan an alternate in case the Sierra Nevada's winter comes early. This will be one of the last official SNU rallies for the year so make a point to come out and rally with us.

SNU November Luncheon, Saturday November 19th Join us at ????. More info to come in October but put it in your calendar and stay tuned.

AIRSTREAMER LOOK BACKS, 20 & 10 YEARS AGO:

The SNU 2002 September 'Airstreamer' Newsletter reported on:

- SNU's August Rally at Davis Creek Park (relocated to Davis for unstated reasons).
- August 17 Business Meeting regarding bylaw amendments and nominations for 2003 officers.
- "In the Limelight" featured Wally Byam, Chapter 2 chronicling his career change from law, advertising and publisher to travel trailer manufacturer. His initial offering was a trailer you built for less than \$100 (how many of you are ready to maintain your own trailer let alone build it?). Wally included new features allowing the camper to standup inside the trailer, chemical toilets, ice



Sierra Nevada Unit Board
Jeni Root, president
Susie Brown, secretary
Gail Williams, treasurer
Jerry Thornburg, trustee
Bill Swirsky, trustee
Gene Baleme, Past President
Don Williams, membership chair & newsletter editor
all links clickable



boxes, gasoline stoves and water pumps; his trailers were hits! [Look to the August Airstreamer for Chapter 1.](#)



The SNU 2012 September 'Airstreamer' Newsletter reported on:

- SNU's August Rally at Obsidian Dome near Mammoth Lakes, CA. Obsidian Dome was always well attended; 8 Airstreams (9 by my count but I count all B-vans even if one is the tow vehicle), 16 people, and 10 dogs representing 3 WBCCI Units.
- The special breakfasts prepared by Bobbi Kingsland, Marla Liberty and Doris Wheeler, eggs in toast, were highlights of the rally with Diane Leippers's chickens supplying the eggs; bacon and lots of fruit from Dyann Thornburg,
- The upcoming Labor Day Cantaloupe Festival Rally in Fallon.
- Don Williams's appointment as Region 12 Membership Chair.
- Speaking of the Williams, Don and Gail were on the road most of the summer (*Gail still says when aren't we on the road*). They were wandering North and hope to eventually head to Alaska (it didn't happen in 2012 but did in 2014). A postcard from Don and Gail shows them at Crater Lake in Oregon.



SEPTEMBER'S SNU ANNIVERSARY RALLY AT WALKER RIVER

The Sierra Nevada Unit celebrates its 42nd anniversary at Walker River State Park's Quail Run Campground. The park's Riverbend Campground is also available and within walking distance (1/4 mile).

Walker River is one of Nevada's newest state park; the Walker Basin Conservancy donated more than 12,000 acres of land and nearly 30 miles of the East Walker River to the State of Nevada to increase public access and conserve natural resources. The donation includes several large ranches that had been closed to public access for more than 100 years. Today, they afford the potential for a vibrant outdoor experience that no other single Nevada State Park can provide. The state park includes four units: the Pitchfork Ranch, Rafter 7 Ranch, Flying M

Ranch and the Nine Mile Ranch". The campgrounds are located in the Pitchfork Ranch unit just adjacent to the Visitor Center.

Its too far ahead to forecast the weather but average highs in September are 93F, lows 64F. And don't worry about battery management if you don't hook up these nighttime temperatures are warm enough to minimize furnace use.

Come out and enjoy Walker River and help celebrate the SNU's 42 anniversary with us. Can't spend the entire weekend; remember Wally's 1st of the Four Freedoms – Freedom from Arrangements! No Reservations required, come out for just two days or even make a day trip of it. Walker River SP is only about 90 miles and less than 2 hours from most of our members.

We'll have lots of activities at our beck and call at Walker River; fishing, wildlife viewing, canoeing/kayaking (the adventurous should bring their own) and four wheeling. In the evening we'll enjoy our shared meals and or desserts, potluck (Saturday), stories and maybe a SoloStove campfire to warm us.

The best approach from Reno is:

Take I-80 east from Reno and head south on NV-439 to the Silver Springs area.

Follow US-95A south from Silver Springs to Yerington and continue south on NV-339.

Turn left on NV-827 just as you enter Mason, drive 1.5 miles and then turn right on NV-208.

Drive 5.5 miles south on 208, turn left on East Walker Road and drive 4.2 miles to the park entrance (large gateway and driveway flanked by small trees on both sides). Can't come for the whole weekend, come any you can make it but understand, a day visit will involve a 180 mile round trip from Reno!

2022 WBCCI DELEGATES' MEETING REPORT

Submitted by Teresa Tighe

The Delegates' Meeting was held on July 27th from 9:00 am to about 11:00 am. Delegates from 106 of 115 clubs were present in person or via Zoom. The minutes from the 2021 Delegates' Meeting were approved. There were no Unfinished Business topics. Here is the New Business:

Constitutional Amendment #1 – Deletion of Constitutional Delegates Meeting

Summary: This motion deletes all references to Constitutional Delegates Meeting in the WBCCI Constitution. If approved, there would be no WBCCI Business meetings at International Rallies; the Business Meetings would be conducted in alignment with the WBCCI fiscal year. There would no longer be a requirement to hold the Rally between June 20th and July 30th. The Amendment would allow members to vote directly on proposed Constitutional amendments electronically or via mail. It would also change the method of amending the WBCCI Constitution.

Discussion: Concerns were raised regarding the fact that International Rallies could be held any time during the year. If a Rally was not held during the Summer, members would not be able to bring their children and grandchildren. If a Rally was held during the Winter in a warmer climate, some members would not be able to attend due to winter weather conditions where they live.

Voting: 2/3's (67%) approval required. A motion for a Roll Call Vote was approved. Each club reported the number of their members who voted FOR or AGAINST. Abstentions were treated as non-votes. Proportional voting was not allowed. There were 2765 (77%) votes FOR and 800 (23%) votes AGAINST. SNU's vote was recorded as 10 FOR and 1 AGAINST.

Motion Resolution: Approved; effective August 1, 2022.

Constitutional Amendment #2 – IBT Restructure

Summary: The Club is facing significant opportunities in membership growth, finances, partnerships, and technology. A structure change at leadership level enhances the Club's ability to quickly recognize and respond to these trends. Clearly defined areas of responsibility, a larger leadership team with diverse skill sets, and strategic goals involving leadership and all regions with strengthen and elevate the club's position amongst potential members and like organizations.

Discussion: None. Before discussion could start, a motion was made and approved to move to voting.

Voting: 2/3's (67%) approval required. A motion for a Roll Call Vote was approved. Each club reported the number of their members who voted FOR or AGAINST. Abstentions were treated as non-votes. Proportional voting was not allowed. There were 2557 (72%) votes FOR and 1009 (28%) votes AGAINST. SNU's vote was recorded as 4 FOR and 5 AGAINST.

Motion Resolution: Approved; effective August 1, 2022. There will be a transition plan, which provides for the newly elected officers of WBCCI (2022 election) to retain their positions as President, Vice President, Secretary and Treasurer. The elected Second and Third Vice Presidents would become members of the Executive Council without titles. Each of these positions will be for only one year until WBCCI members elect the full Executive Council in 2023.

Look for Survey on 2023 Rally Locations

It's rally planning time for 2023 and the Sierra Nevada Unit needs your input to identify rally locations and activities you want to attend and support. Look for an email with an electronic survey, link or web site where you can rank locations for the SNU officers and board members. We are still mostly scheduling on the third full weekend of the month which helps miss Easter, Mother's Day and national holidays but we can move the rally to other weekends if there's an event we should incorporate in our rally activities. The following is a list of locations the SNU has used or considered in the past. Know of a place not on the list, let us know.

Park or Location	Closest City & State	from Reno	Park or Location	Closest City & State	from Reno
Davis Creek Regional Park	Washoe Valley, NV	25	Coleville Walker KOA	Coleville, NV	72
Virginia City RV Park	Virginia City, NV	27	Topaz Lake Campground	Gardnerville, NV	73
Boca Rest/Springs Cmpgd	Boca Lake, CA	28	Weed Heights	Yerington, NV	81
Washoe Lake State Park	Washoe Valley, NV	31	Stillwater Wildlife Refuge	Fallon, NV	90
Prosser Family Camp	Truckee, CA	36	Walker River Resort	near Smith, NV	90
Pyramid Lake, Pelican Point	NE/Nixon, NV	38	Walker River State Park	near Smith, NV	90
Dayton State Park	Dayton, NV	42	Sweetwater Summit	S/Smith, NV	100
Crystal Springs Campground	Markleeville, CA	62	Crags Campground	W/Bridgeport, CA	115
Turtle Rock Park Campground	Markleeville, CA	64	Ram Horn Springs	Susanville, CA	115
Western Pacific Railroad	Portola, CA	50	Eagle Lake, Rocky Point	N/Susanville, CA	118
Lahontan Reservoir, Beach 7	Silver Springs, NV	55	Squaw Creek Reservoir	Gerlach, NV	125
Crocker-Beckworth Campgro	N/Portola, CA	50	Rye Patch Reservoir	Lovelock, NV	130
Fort Sage Campground	Doyle, CA	58	Hat Creek Group	NW/Susanville, CA	140
Fort Churchill	Silver Springs, NV	60	Lassen RV Resort & Bistro	McArthur, CA	140
Fort Churchill Scout Camp	Silver Springs, NV	60	Unionville	Unionville, NV	158
Campground by the Lake	South Lake Tahoe, CA	62	Glass Creek Campground	395 S/June Lake	160
Fallon Canaloupe Festival	Fallon, NV	63	Obsidian Dome & Mammoth	Mammoth Lakes, CA	160
Indian Creek	Gardnerville, NV	65	Berlin-Ichthyosaur	Gabbs, NV	180
Kit Carson Campground	Markleeville, CA	65	Hickison Petroglyph	E/Austin, NV	200
Blue Lake Basin, Hope Valley	W/Markleeville, CA	67	Illipah Reservoir, BLM	Ely, NV	286
Grover Hot Springs	Markleeville, CA	67	Iron horse RV Resort, Elko,	Elko, NV	292
Markleeville Campground, UFS	Markleeville, CA	68	Southfork SRC	Spring Creek, NV	310
Mason Valley Wildlife Area	Yerington, NV	70	Ely KOA	Ely, NV	324
Topaz Lake RV Park	Gardnerville, NV	70	Ward Mountain	Ely, NV	326
Topaz Landing Marina & RV Pa	Gardnerville, NV	70	Death Valley	Mesquite Spring, CA	330



Walker River



Anniversary



Rally



To encourage clubs and rallies

excerpted from Wally's Creed



that provide an endless



source of friendships,



travel fun and



personal



expressions.

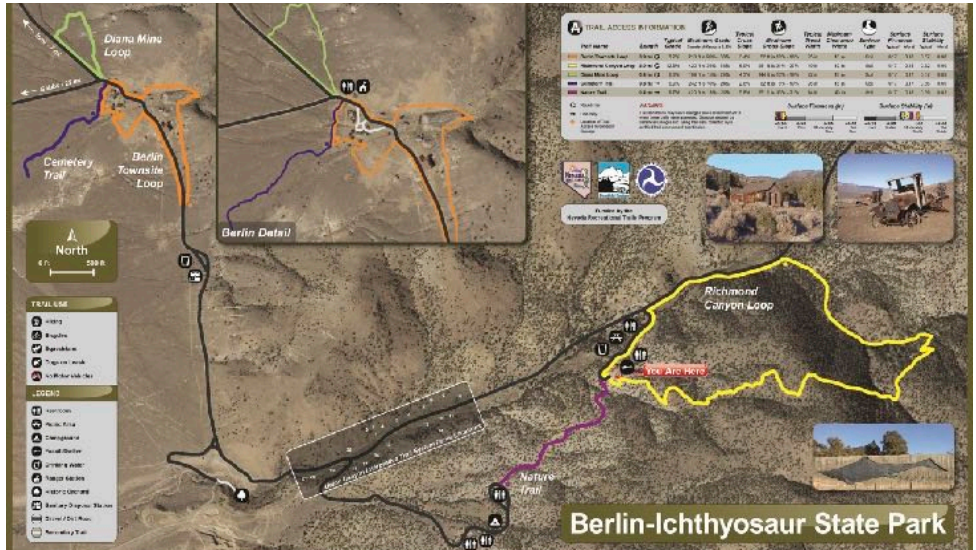
BERLIN-ICHTHYOSAUR RALLY (FROM DON & GAIL'S TRAVELOGUE)

Travel Day 20 after Caravan! 335 miles, Wild Horse State Recreation Area to the Berlin-Ichthyosaur Rally

Berlin-Ichthyosaur State Park is accessible with two wheel drive unless one wants to venture out on some of the less improved roads where four wheel drive gives one more confidence. The pavement stops about 2-1/2 miles from the park entrance and all park roads are gravel. They are 1-1/2 lanes wide, smoothly graded with a few places to pass two trailers or RVs (remember Obsidian Dome).

August 16th

Tuesday - it seemed like a long day; we topped off on water, dumped two (grey & black water tanks) to prepare for boondocking at Berlin- Ichthyosaur SP, then headed south with a short stop in Austin to top off diesel.



The skies east of the Shoshone Mountains were blue with white puffy clouds; to the west were high clouds, some dark and threatening but rain wasn't reaching the ground. We pulled in to Berlin-Ichthyosaur SP at 5:40P and slowly wound our way up to the campground. Of the 14 available sites we had our pick of, well 14! No one was here! Our site, #13, is fairly level, has a large picnic table and shelter right next to our Airstream, a fire pit (no fires allowed at this time) and a beautiful view across the Ione Valley to the Paradise Range and Brunton Pass. It's also near the campground entrance where we can easily meet, greet and direct Airstream rally attendees.

The campground is very accommodating to Airstreams. Bruce and I surveyed all 14 campsites (no evaluation for slides). Most sites would accommodate a 28-30 foot Airstream and tow vehicle connected or a motorhome except #3 and #8 which are only 35' deep overall. All three pull throughs for longer trailers and rigs were somewhat sloped but did have a sweet spot side to side. The best spot, #9, is at the top of the campground and has commanding views to the of the area and quick access to the 1/3 mile trail to the Ichthyosaur exhibit.

There is a dump station near the entrance to the campground but what we didn't expect was that the park had a boil water notice everywhere. We talked with Jeff, the park Ranger; one sample came back with bacteria (possible sampling error - not E-coli) but the next two repeat tests were clear. They will remove the notices if the next (3rd) test is clear.

August 17th - 19th

Wednesday - we didn't record the nights low but it was 71F at 7:30A; walked the dogs for exercise (and other stuff) and had a leisurely breakfast. We had brief periods of sprinkles in the morning before Gene and Carmen arrived. They had taken the scenic route from NV-722 (the old Lincoln Highway) south on Reese River Road, over Ione Summit (7480 ft) to Ione and then Berlin-Ichthyosaur SP (50 miles of dirt roads).

We had brief rain showers off and on through the afternoon and early evening with some thunder in the distance. Gene kept his lightning rod, err I mean antenna up to protect us! We had a couple of strong rain showers during the night, not enough to cause the kind of damage seen recently in Death Valley and Mojave Desert National Preserve but enough for park staff to use a drag-box to fill-in ruts and level roads where the water crossed. As of supper there are five rigs in the park, only two Airstreams.

Thursday - Gene and Carmen tend to sleep in so we placed a rug and chairs in a position for Mongo & Bruce to welcome our rally goers. Wandering around our campsite I found a long unused trail towards Union Canyon; a slight depression with rocks lining each side marking turns, not always noticeable across the open ground and gone in the small washes but typically reappearing on the other side. Late morning Gene and I followed the trail and visited all the exhibits in the canyon; the locations of homes, mill, saloon, store and mine shafts from the late 1800s town of Union, NV. Other than debris, only the Adobe House still stands.

Friday - we wrangled a visit to the Ichthyosaur Fossil House (normally only open on Saturday & Sunday); Ranger Jeff gave us an introduction and allowed us to peruse the building and exhibits. Quite a fascinating history of the ichthyosaur evolution and possible reasons for extinction.

Gene and I sat down Friday evening and discussed past, present and new rally sites that might help the SNU increase member participation. Attendance at previous year's rallies (excluding 2020) has typically been 4 to 6 rigs with an occasional 8 or 10 but this year with the exception of Rye Patch, Lahontan and Weeds, only 2 to 5 rigs attended. I will prepare and circulate a member survey for next year's rally sites.

Travel Day 21 after C! 437 miles, Berlin-Ichthyosaur to Home

Saturday - no new SNU members had arrived since Wednesday, so Gail and I packed up to break camp and bade goodbye to Carmen & Gene so we headed south towards Riverside. We made a brief tour of Gabbs to see if fuel and supplies were typically available. Someone was working on the only gasoline pump in town, diesel did not seem to be available and the general store and restaurants were closed so I wonder if they are ever open on a regular basis. NV 361 south was extremely rough, rougher than almost every paved and dirt/gravel road we drove on in Northwest Territories, Canada!!

We noticed two Airstreams in the rest area when we drove through Luning, NV; we guessed that their next stop would be the rally at Berlin-Ichthyosaur! We had an easy Border crossing into California and breezed down US-395. As it was early and temps in the Owens Valley varied from high 90s to 104, we continued south arriving home in Riverside at 6:30P.

THE MINING CAMP OF UNION

In May, 1863, A.J. McGhee and a small group of prospectors in this canyon reported the discovery of the Union Ledge, the first ore discovery of this region. As other deposits were located, the mining camps of Lone, Grantsville, and Union were settled and the Union Mining District organized. Union, with its log and adobe structures running along these canyon walls, was to be the district's minor and almost forgotten camp.

Little is known of the early years of Union, but it began with promise. In 1865 the REESE RIVER REVELLE reported the "Union is already cited... but it will soon 'see another night' when curling smoke and steam greet the early morn and hundreds of men shall go forth to their labors in shaft and tunnel, digging, blasting and rolling out the bowels of the mountain." Union was congratulated on its prosperity, the Union and nearby ledges were to give employment to generations of men. A brickyard was constructed and the Atlantic and Pacific Construction Company of Union contracted for 300,000 bricks for its 20 stamp mill. But in the end prosperity and the town of Union appear to have been brief.

Berlin-Ichthyosaur 2022

