

# Report on Potential for SNU Camping in the Green Creek Drainage Area

June 1, 2012

Richard & Doris Wheeler

Green Creek is a substantial creek that drains the area from about 12 miles SSW of Bridgeport, CA and joins the East Walker River about 3 miles SSW of Bridgeport. Access to the drainage area is by Green Creek Rd. about 5 miles south of Bridgeport on US 395 (See USFS Map). The Green Creek Rd Turn off is located at 38° 11.789' N, 119°13.135' W. Green Creek is a good two lane dirt road except at the end in the USFS Campground where it narrows considerably.

I went to the end of the road where the USFS campground is and talked with the Campground Host (Ed). I checked out the group campsites which were too small and too costly (\$60-\$70). I didn't even ask if that was per night or 3 days. I did not ask him how bad the bugs are and when they were less bothersome. I didn't notice any bugs when I walked around the two camp sites that I discuss below. The individual camp sites at the USFS campground were too small and too tight to maneuver a 30' trailer. I do not recommend the USFS camp sites.

The Camp Grounds I investigated are about 7.5 miles on Green Creek Rd. from the intersection of US 395. This upper part of the Green Creek Valley is picturesque with Evergreens and Aspens. The altitude is 7900 feet. The two sites I checked out I have called S Green Crk. CG and N. Green Crk. CG. From The shading on the USFS map this land is State Land. Both sites are near the creek.

## **S Green Crk. CG** (38° 06.977' N, 119° 15.41' W)

This area is a large meadow with trees along the creek. There is space for a couple of trailers backed under the trees in the eastern end and enough space around that area for five or six more trailers. The meadow is covered with grass six to eight inches high. The meadow shows signs where vehicles have been stuck when it was wet. It was dry when we went there. It could be a problem when it rains. The creek is close by. This Google earth view shows the preferred camping area by the trees on the eastern edge and the entrance on the western edge of the meadow.

## **S Green Crk. CG**





Entrance on the western edge.



View of the meadow



Trees at the eastern end. Creek on the left.



View up the valley from the meadow

**N Green Crk. CG** (38° 07.200' N, 119° 14.90' W)

This appears to be a better site. It does not appear to be a problem when it rains. It also appears to be more popular. There were campers there when we came and there were campers there when Google Earth took their picture. The biggest problem here is "S" turn through the trees on the entrance on the east side (potential for some significant Nevada pin stripping). We didn't check the west entrance but there appears to be some trees close to the road there also. The area will easily support eight to ten trailers.

**N Green Crk. CG**



Placard for the campers that were there.

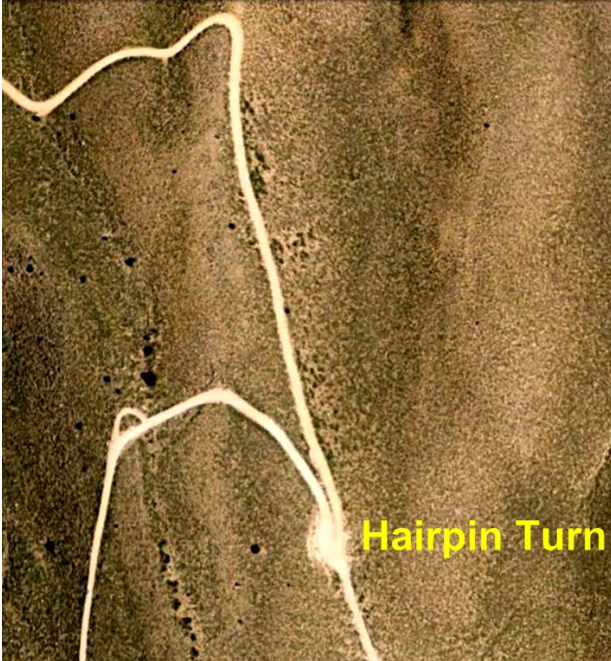


Campers at this site.



View up valley from this site.

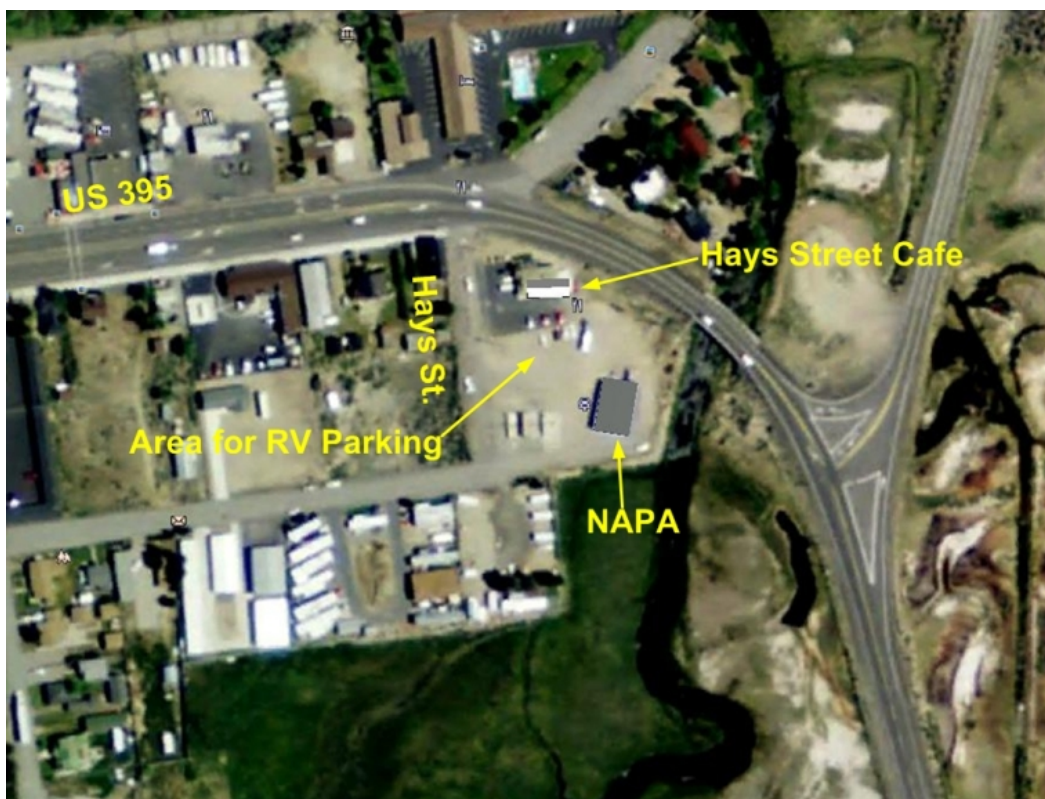
Green Creek Rd has one challenge. That is a hairpin turn. I believe there is sufficien room to swing a 32' trailer. Here are some pictures. First Google Earth.



View of Bridgeport to the north when returning on Green Creek Rd.

I talked with USFS camp host about fires in the areas along Green Creek Rd. He said the fire restrictions have not been finalized but he doubts that fires will be permitted in any areas outside of the fire rings in the USFS campground. This is because this year has been so dry. Each of the above sites have stone fire rings but not of an official authorized nature.

On the way there from the north you want to stop in Bridgeport for lunch and I recommend the Hays Street Café. Hays St. is just where US 395 starts to turn south at the east end of town. There is room for RV parking between the Café and NAPA as shown.



## USFS Map and Route

